



Republic of the Philippines
Department of Education

11 NOV 2015

DepEd MEMORANDUM
No. **141**, s. 2015

2016 METROBANK-MTAP-DEPED MATH CHALLENGE

To: Bureau Directors
Regional Directors
Schools Division Superintendents
Heads, Public and Private Elementary and Secondary Schools
All Others Concerned

1. On its 15th year of nationwide Competition, the Metrobank Foundation Inc. (MBFI), the Mathematics Teachers Association of the Philippines (MTAP) and the Department of Education (DepEd) will hold the **2016 Metrobank-MTAP-DepEd Math Challenge (MMC)** from January to March 2016.

2. The overall objective of the Competition is to contribute in improving the quality of Mathematics Education in the Philippines through the following:

- a. awakening greater interest in Mathematics among elementary and secondary school learners;
- b. encouraging them to strive for excellence in Mathematics;
- c. discovering mathematical talents among them;
- d. developing the values of hardwork, perseverance, honesty, teamwork, and sportsmanship; and
- e. providing them with opportunities in leadership and cooperative undertaking.

3. The **Elimination and Schools Division Level Competition** will be participated in by elementary and secondary school learners nationwide. However, only Grades 6 and 10 learners can participate in the **Regional and National Finals**. All public and private schools are required to submit the MMC Form No. 1 contained in Enclosure No. 3 to the schools division office (SDO) for registration. As started last year, the Mathematics supervisor with the MMC online portal account should send the MMC Form 2 through an online portal, its instruction provided in Enclosure No. 4. The Contest Mechanics are also contained in Enclosure No. 3.

4. Division Mathematics supervisors shall be in charge of the preparation, implementation and documentation of the **Elimination and Schools Division Finals Competition**, including preparation of the program and fielding of qualified officials to serve as judges, proctors and hosts/quizzesmasters. They will also be responsible for settling all questions, including protests, which may arise in the course of the Competition. A panel of advisers shall also be formed by the schools division superintendent to address questions during the Competition. *For security and for purposes of maintaining the confidentiality of the test questions, the turn over of the test materials will be documented and all packages in the different stages of the Competition will be opened simultaneously at 8:00 a.m. on the date of the Competition. All concerned are required to carefully read the MMC Document No. 2 for the Operating Guidelines provided in Enclosure No. 2, as new policies are strictly implemented, and the Primer provided in Enclosure No. 1.*

5. For the **Regional Finals**, the Regional Mathematics supervisor shall be in-charge of the preparation, implementation and documentation of the Regional Finals, including the preparation of program, designation of judges, proctors, correctors for the individual competition, and hosts/quizzmasters. He/She will also be responsible for settling all questions, including protests, which may arise in the course of the Competition.

6. Representatives from MTAP will assist in facilitating this stage of the Competition, both in the individual and team competitions.

7. For the **National Finals**, the following are the qualifications in determining the ten National Finalists for both individual and team competitions at the elementary and secondary schools levels:

- a. Top scorers for both Categories A and B in the National Capital Region (NCR);
- b. Top scorer in each geographical area (the rest of Luzon, Visayas, and Mindanao); and
- c. Remaining five top scorers across all regions.

8. All DepEd officials, including school heads (SHs) and Mathematics teachers, are requested to actively campaign and to enjoin support for the Competition of all public and private schools nationwide to ensure maximum participation.

9. The participating parties shall shoulder expenses from the Elimination Round to the Regional Level Competition. Participants from private schools shall make necessary arrangements for their expenses with their SHs. At the National Level Competition, the MBFI will finance the transportation expenses, accommodation and meal allowance of the national finalists and their coaches. MBFI shall also provide the awards for the winners from the Schools Division Finals (medals) to the Regional and National Finals (cash prizes, medals and trophies) as well as cash incentives for the coaches of regional and national finalists.

10. The enclosed documents and forms (Enclosure Nos. 1-5) may also be downloaded either from www.mbfoundation.org or www.facebook.com/MetrobankMathChallenge.

11. Separate guidelines will be issued for the NCR Competitions.

12. In case of conflict in schedule with other DepEd activities, the schools division and regional offices are advised to assign appropriate persons to administer the tests at the schools division and/or regional levels on the scheduled dates. *As agreed upon by the MMC National Steering Committee, conduct of the contest other than the schedule below is not allowed:*

- Elimination Round : January 14, 2016 (Elementary)
January 15, 2016 (Secondary School)
- Schools Division : February 4, 2016 (Elementary)
February 5, 2016 (Secondary School)
- Regional Finals : February 19, 2016 (Individual and Team Competition)
- National Finals : March 18, 2016 (Individual Written Examination)
March 19, 2016 (Individual and Team Oral Competition)

13. Arrangements for substitute teachers must be made to ensure that the classes of the participating teacher coaches will not be disrupted.

14. The Schools Division Mathematics supervisor shall submit a completion report on the conduct of the Elimination and Schools Division Finals on or before **February 19, 2016**. Only an electronic copy of the report should be submitted through email at mtmc_secretariat@yahoo.com.

15. For more information, all concerned may contact **Mr. Maco R. Ravanzo**, Program Coordinator, Mathematics Teachers Association of the Philippines (MTAP), No. 39 Oxford St., corner Columbia Street, Quezon City at telephone nos. (02) 898-8898 and (02) 857-0618, mobile phone no. 0922-804-3055 or email at mark.ravanzo@metrobank.com.ph.

16. Immediate dissemination of this Memorandum is desired.


BR. ARMIN A. LUISTRO FSC
Secretary

Encls.:

As stated

Reference:

DepEd Memorandum No. 125, s. 2014

To be indicated in the Perpetual Index
under the following subjects:

CONTESTS
LEARNERS
Learning Area, MATHEMATICS
PRIZES or AWARDS
SOCIETY OR ASSOCIATIONS



PRIMER

MMC Document No. 1



ABOUT THE COMPETITION

I. NATURE

The Metrobank-NTAP-DepEd Math Challenge is an annual Mathematics competition for elementary and secondary students in both public and private schools nationwide. Now on its 15th year, the Math Challenge is being implemented by the Metrobank Foundation, Inc. (MBFI), the Mathematics Teachers Association of the Philippines (MTAP) and the Department of Education (DepEd), in cooperation with First Metro Investment Corporation.

II. OBJECTIVES

The overall objective of the Metrobank-NTAP-DepEd Math Challenge is to contribute in improving the quality of mathematics education in the Philippines. Specifically, it aims to:

- Awaken greater interest in Mathematics among elementary and secondary students in both public and private schools all over the country;
- Encourage students to strive for excellence in Mathematics;
- Encourage mastery of basic mathematical skills;
- Discover mathematical talents among the students;
- Develop the values of hard work, perseverance, honesty, teamwork and sportsmanship; and
- Provide students with opportunities in leadership and cooperative undertaking.

III. COVERAGE

The coverage of the competition shall be strictly the current and approved DepEd K to 12 Education Curriculum for Elementary and Secondary, per grade level, for schools with enhanced or modified curriculum, an approved curriculum. District certification will be required for submission.

QUALIFICATIONS

- Eliminations:** All bonafide students enrolled in Grades 1 to 10 ONLY, in any public and private school in 18 regions including those from State, Universities and Colleges (SUCs), as certified by the principal or registrar of the school.

Note: Contestants must be actually enrolled in the grade level they are competing. In NO instance shall mixed grade level participation in team competition be allowed. Only three (3) students per grade level shall represent each school, for both public and private.

- Division Finals:** The top six (min.) to 20 (max.) highest scoring schools in the elimination round per grade level, Grades 1 to 6 (for elementary) and Grades 7 to 10 (for Secondary) may participate.

Note: The number of qualified division finalists depends on the total number of schools that will participate in the elimination round. Please refer to the Contest Mechanics (MMC Document No. 3) for details.

HOW TO JOIN

- All public and private schools must accomplish a one-page registration form (MMC Form No.1) certified by the principal/registrar, indicating the school's official contestants and coaches/trainers per grade/year level. This is important to determine the number of questionnaires to be produced for the elimination.
- Submit a photocopy of the MMC Form 1 and the school identification cards of the contestants and coaches to the Region Division Math Supervisors where your school is located on or before November 20, 2015.
- The concerned District Division Math Supervisors shall then accomplish and submit the summary of participants (MMC Form No. 2) via the MMC online portal indicating the testing centers and the number of participants. Instructions will be provided to all DepEd Divisions (MMC Document No. 5).
- The accomplished MMC Form No. 2 must be encoded and submitted on or before December 11, 2015.

WHERE TO GET THE FORMS

Registration forms (MMC Form No.1) are available at the Metrobank Foundation, all Metrobank Branches, and the Division and Regional offices. You may also download the forms from Metrobank Foundation website at www.mbfi.org.ph starting October 2015, or through the official Facebook page of MMC at www.facebook.com/metrobankmathchallenge.

C. Regional Finals:

- **Individual Competition:** All top placers in each division during the elimination round, for both Grades 6 and 10, provided they meet the hurdle rate of 25 points out of a perfect score of 50.
- **Team Competition:** All the 1st placers during the Division Finals, for both Grades 6 and 10, provided they meet the hurdle rate of 30 points out of a perfect score of 60.

D. National Finals (for both Individual and Team Category)

- **For both Elementary and Secondary Levels:**
 - i. Top scorers for both Categories A & B in NCR
 - ii. Top scorer in each geographical area (Rest of Luzon, Visayas, and Mindanao)
 - iii. Remaining five (5) top scorers across all regions
- **Individual and Team contestants should meet the hurdle rate of 45 points out of a perfect score of 60.**

PRIZES AND REWARDS

FOR STUDENTS

A. Elimination Stage (Grades 1 to 6; Grades 7 to Grade 10)

The following top ranking students shall be given certificates of merit:

- ❖ 1st Honors: for those who get 90% correct answers
- ❖ 2nd Honors: for those who get 80% correct answers
- ❖ 3rd Honors: for those who get 70% correct answers

B. Division Finals (Grades 1 to 6; Grades 7 to Grade 10)

- ❖ Medals and certificates for each member of the top 3 winning teams per grade/year level
- ❖ Certificates of recognition for the schools of the top 3 winning teams, per grade/year level
- ❖ Certificates of appreciation for all coaches/trainors
- ❖ Certificates of merit for non-winning contestants

C. Regional Finals (Grade 6 and Grade 10)

- ❖ Medals and cash prizes for the top 3 individual winners and members of the top 3 winning teams per level
- ❖ Certificates of recognition for the top 3 individual winners and members of the top 3 winning teams per grade/year level
- ❖ Trophies for the schools of the top 3 winning teams per level
- ❖ Certificates of recognition for all coaches/trainors
- ❖ Certificates of merit for non-winning Regional Finalists

D. National Finals (Grade 6 and Grade 10)

- ❖ Medals and cash prizes for the top 3 individual winners and the members of the top 3 winning teams per level
- ❖ Trophies for the schools of the top 3 winning teams per level
- ❖ Certificates of recognition for all coaches/trainors
- ❖ Certificates of recognition for National Finalists
- ❖ Gift Certificates and tokens from sponsors

FOR COACHES

Coaches in the Regional and National Finals will receive cash allowance. However, if the coach handles both individual and team contestants from the same school, he/she will receive cash allowance only once.

STAGES OF THE COMPETITION

A. INDIVIDUAL COMPETITION

Elimination Stage: Grades 1 to 6 and 7 to 10
(Written Exam)

Regional Finals:
Grade 6 and Grade 10
(Written Exam)

National Finals:
Grade 6 and Grade 10
(Written and Oral Exam)

B. TEAM COMPETITION

Elimination Stage: Grades 1 to 6 and 7 to 10
(Written Exam)

Division Finals:
Grades 1 to 6; Grades 7 to 10
(Oral Exam)

Regional Finals:
Grade 6 and Grade 10
(Written Exam)

National Finals:
Grade 6 and Grade 10
(Oral Exam)

COMPETITION IMPLEMENTORS

A **National Steering Committee** composed of officers / representatives from MBFI, MTAP and DepEd, shall oversee the implementation and formulate the guidelines, policies and mechanics of the competition.

The **MBFI** shall serve as major sponsor and implementor and thus, be involved in all aspects and phases of the competition including supervision of the **National Finals and Awarding Ceremonies**.

The **MTAP** shall oversee the conduct of the Regional Finals in coordination with DepEd and the National Finals in coordination with MBFI. MTAP will also be responsible for settling all questions, including protests, which may arise in the course of the competition at the **Regional Level**.

The **DepEd** shall supervise the competition from the Elimination Rounds to the Regional Finals and shoulder expenses incidental thereto from sources to be determined by participating parties. DepEd will also be responsible for settling all questions, including protests, which may arise in the course of the competition from the **Elimination to the Division Level**.

COMPETITION SCHEDULE

November **20**, 2015

Deadline for Submission of MMC Form No. 1
(Registration Form of Public and Private Schools) to be
submitted to respective DepEd Division Office

January **14** and **15**, 2016

Elimination Round for Elementary Level
(January 14) and High School Level (January 15)

February **19**, 2016

Regional Finals

FOR MORE DETAILS



+632 912 5249
+632 709 0447
+632 898 8898



iccoronel_mtaphil@yahoo.com
mark.ravanzo@metrobank.com.ph



/MetrobankMathChallenge

December **11**, 2015

Deadline for Online Submission of MMC Form No. 2
(DepEd Division Math Supervisors to Submit Summary
of Total Participating Students per Grade Levels
via the MMC online portal)

February **4th** and **5**, 2016

Division Team Finals for Elementary (February 4)
and High School Level (February 5)

March **18**, 2016

National Individual Finals
(Written Exam)

March **19**, 2016

National Finals (Individual and Team Orals) and
Awarding Ceremonies
Venue is Metrobank Plaza Auditorium, Makati City



OPERATING GUIDELINES

MMC Document No. 2

I. SCHOOL LEVEL:

1. It is recommended for schools to conduct their own mini-competition using a written exam by grade level to determine the best candidates who will join the MMC elimination rounds.
2. The top three students per grade level who will obtain the highest scores will represent the school in the Elimination Round.

Note: The elimination round is open to ALL interested schools, both private and public. It is suggested that school districts should not conduct their own elimination to choose contestants for the whole district. This is to give each school equal chances of joining.

3. There shall be a maximum of (18) pupils for Elementary and/or (12) students for High School in every participating school, broken down as follows.

Example:	School A (Elementary)					
Grade	1	2	3	4	5	6
Number of Pupils	3	3	3	3	3	3
Total	18					

Example:	School A (High School)			
Grade/level	7	8	9	10
Number of Pupils	3	3	3	3
Total	12			

4. All participating public and private schools are required to accomplish a one-page **Registration Form (MMC Form No. 1)**, a photocopy of which should be sent directly to the DepEd Division Math Supervisor In-charge on or before **November 20, 2015**.
5. The school must present the original copy to the registration in-charge together with identification cards during the Elimination Round on **January 14, 2016** (Elementary) or **January 15, 2016** (High School). This serves as permit in joining the competition. **"No permit, No Entry"** policy shall be implemented.
6. The DepEd Division Math Supervisors shall then collate all MMC Form No. 1 submissions and accomplish the summary of participants (**MMC Form No. 2**) **ONLINE** indicating the testing centers and the total number of students per grade per testing center through an **MMC online portal** on or before **December 11, 2015**. Instructions are in MMC Document No. 4. Failure to submit may be a ground for disqualification of the Division in conducting the elimination round, which is scheduled on **January 14-15, 2016**.

II. ELIMINATION ROUNDS

7. The DepEd Division Math Supervisor shall be in-charge of the preparation, implementation and documentation of the Elimination Rounds competition. He/she will also be responsible for settling all questions, including protests, which may arise in the course of the competition, or a panel of advisers may be formed by the Schools Division Superintendent.

8. The test materials shall be prepared by MTAP and transmitted through the pre-assigned Metrobank branch for each Division. The pre-assignment and matching will be done by Metrobank Foundation.
9. In case there is no Metrobank branch in the area, the test materials shall be delivered directly to the DepEd Division Office/s addressed to the Schools Division Superintendent.
10. The concerned Branch Manager or Schools Division Superintendent shall turn over the questionnaires personally to the Division Math Supervisor on January 13, 2016 for Elementary and January 14, 2016 for High School.
11. The Division Math Supervisor shall then turn over the questionnaires to the Testing Center Coordinators on the same dates. A certification on top of the package which contains the questionnaires will be signed by the Metrobank Branch Manager, Schools Division Superintendent, the Division Math Supervisor, and the Testing Center Coordinator to document the said turn over of test questionnaires.
12. A Division may have one or more testing centers depending on the distance between the schools, the size of the Division and the number of participating schools. It will be feasible to have one center per District for the elementary. For the High School, a cluster of towns may have one center. A cluster of City Divisions with very few Secondary schools may also have just one center.

Example: Suppose Division A has 20 participating schools. Then, there will be 20×3 or 60 students/grade level or a total of 360 pupils from Grades 1 to 6 who will take the test in the Center. If those 20 schools are very far from each other, the Division may have more than one center for them.
13. The test materials will be opened publicly by the Testing Center Coordinator just before the start of the competition at 8:00 a.m. A short opening program may be conducted where the materials will be officially opened. A certification will be signed by the Testing Center Coordinator and selected proctors to document the proceedings.
14. In case the number of questionnaires sent is not enough, photocopying is **NOT ALLOWED**. Only pre-registered participants shall be allowed to take the test. Thus participating schools must ensure that they submitted a photocopy of their MMC Form No. 1 to their local DepEd Divisions and that the date encoded online (**MMC Form No. 2**) are submitted on time and accurate.
15. **The Elimination Round should be held simultaneously in all regions nationwide on January 14-15, 2015 at 8:30 a.m. As agreed upon by the MMC National Steering Committee, conduct of the contest other than this schedule is not allowed.**
16. The test papers will be corrected using the answer key provided. Please refer to the **Guidelines in Checking the Test Papers**.
17. The winners of the elimination round should be announced as soon as test papers are corrected and within the date of the competition. In case the results will not be released because of a valid reason (i.e. too many schools joined and the assigned correctors will not be able to finish checking the test papers on time), the Division Math Supervisor should announce the results not later than before January 22, 2016.

18. Announcement of results of the elimination round should be formalized through the issuance of a DepEd Division memorandum circular.
19. Concerned Division Math supervisors are also required to post the results of the elimination round ONLINE via the MMC site.
20. The school scores of the whole Division per grade shall be ranked from highest to lowest. Please refer to the MMC Document No. 3 (Contest Mechanics) Item no. 13 for the guide in computing the total scores for participating schools.
21. The top 6 to 20 highest scoring schools qualify to participate in the **Division Team Finals** competition. The number of teams qualified to join the Division Finals is dependent on the number of participating schools in the elimination rounds. Please refer to matrix below:

Number of Participating Schools	Number of Teams to Qualify in the Division Finals	Number of Participating Schools	Number of Teams to Qualify in the Division Finals
15 or fewer	Top 6	31-35	Top 14
16-20	Top 8	36-40	Top 16
21-25	Top 10	41-45	Top 18
26-30	Top 12	46 or more	Top 20

Note: 20 is the maximum number of teams because based on experience, it is the most manageable number for an oral team competition.

22. The DepEd Division Math Supervisors shall then submit the summary of the number of teams which are qualified to join the Division Finals (**MMC Form No. 3**) **ONLINE** through the **MMC online portal** on or before **January 22, 2016**. Delay in the submission will cause delay in sending the test materials.
23. Certificates of Merit shall be awarded to students from Grades 1 to 10 who qualify under the following conditions in the Elimination Rounds based on their performance:

Rank	Grade 1 and 2	Grade 3 and 4	Grade 5 to 10
1 st Honors	For those who get 27 or more correct answers	For those who get 36 or more correct answers	For those who get 45 or more correct answers
2 nd Honors	For those who get 24 to 26 correct answers	For those who get 32 to 35 correct answers	For those who get 40 to 44 correct answers
3 rd Honors	For those who get 21 to 23 correct answers	For those who get 28 to 31 correct answers	For those who get 35 to 39 correct answers

24. The top Grade 6 and Grade 10 individuals of each Division in the elimination rounds automatically qualify to the Regional Finals provided they meet the hurdle rate of 25 out of a perfect score of 50 or 50% out of the perfect score.

III. DIVISION FINALS

25. The **DepEd Division Math Supervisor** shall be in-charge of the preparation, implementation and documentation of the Division Finals competition including preparation of the program and designation of judges, proctors and hosts/quizmasters. **He/she will also be responsible for settling**

all questions, including protests, that may arise in the course of the competition, or a panel of advisers may be formed by the Division Schools Superintendent.

26. The test materials shall be prepared by MTAP and transmitted through the same Metrobank branch in the Division/area which coordinated the elimination rounds.
27. In case there is no Metrobank branch in the area, the test materials shall be delivered to the Division Office/s addressed to the Schools Division Superintendent.
28. The concerned Branch Manager or Schools Division Superintendent shall turn over the questionnaires personally to the DepEd Division Math Supervisor on the day of the Division Finals, i.e., February 4, 2016 (Elementary) and February 5, 2016 (High School).
29. An Opening Program for the Division Finals should be made at **8:00 am** where the package of test questionnaires shall be opened publicly and witnessed by the Branch Manager or Schools Division Superintendent. This must be documented using digital or cellphone camera, as proof.
30. The Team Orals should be conducted in three different venues (Grades 1-2 in one venue, and Grade 2-3 in another venue, and Grade 5-6 in another venue). The competition should be held simultaneously, preferably on the stage, inside the gym or any function room that can accommodate the participants and audience for the competition.
31. The following schedule of competition shall be followed:

Elementary (February 4, 2016)			
Venue A	Venue B	Venue C	Time
Grade 1	Grade 3	Grade 5	8:30 am
Grade 2	Grade 4	Grade 6	10:00 am
High School (February 5, 2016)			
Venue A	Venue B	Time	
Grade 7	Grade 9	8:30 am	
Grade 8	Grade 10	10:00 am	

32. Concerned Division Math supervisors are also required to **post the result of the Division Finals ONLINE via the MMC site.**
33. The results of the Division Finals should be announced immediately after the competition and a DepEd memo should be issued to formalize the announcement. A copy of the memo should be furnished the DepEd Regional Math Supervisor for reference in preparation for the Regional Finals.
34. **Medals and certificates** will be awarded to the members of the top 3 winning teams per grade/year level regardless of their scores.
35. First place winners in the Grade 6 and Grade 10 in the Division Finals are qualified to compete in the **Regional Finals** provided they meet the hurdle rate of **30 points out of a perfect score of 60.**
36. Certificates of Recognition will be awarded to the schools of the top 3 winning teams. Certificates of appreciation will be given to all coaches and staff members of the competition. All non-winning contestants will be given certificates of merit.

37. The Division Math Supervisor shall submit a completion report on the conduct of the Elimination and Division Finals on or before **February 19, 2016**. Only an electronic copy of the report should be submitted through email at mmc_secretariat@yahoo.com, with the following content:

Elimination Rounds	
1.	Executive Summary (Narrative Report)
2.	Registration of the Contestants
3.	Copy of the Opening Program
4.	Certifications (Opening and Turnover of the Test Materials)
5.	Division Memorandum on the Results of the Elimination Rounds
6.	5 best photos (action shots)
Division Finals	
1.	Executive Summary (Narrative Report)
2.	Registration of the Contestants
3.	Copy of the Opening Program
4.	Certifications (Opening and Turnover of the Test Materials)
5.	Division Memorandum on the Results of the Division Finals
6.	List of Judges
7.	5 best photos (action shots)

IV. REGIONAL FINALS

38. The **DepEd Regional Math Supervisor** shall be in-charge of the preparation, implementation and documentation of the Regional Finals, including preparation of program, designation of judges, proctors, correctors for the individual competition and hosts/quizzmasters. He/She must also endeavor to provide whatever assistance is needed by the MTAP representative.
39. An **MTAP representative** will assist in facilitating this stage of the contest, both for the individual and team competitions. He/she will also be responsible for settling all questions, including protests, that may arise in the course of the competition.
40. The MTAP representative shall bring the questionnaires and awarding materials on the date of the contest. He/she will open the package containing the questionnaires at 8:00 am with the presence of the Schools Division Superintendent.
- A. INDIVIDUAL WRITTEN COMPETITION: (Grade 6 and Grade 10 only)**
41. The competition shall be conducted in a close room. For this competition, the contestants must use their code numbers given to them at the registration.
42. There may be more than one corrector for the papers, but only one may correct either Part II or III for the sake of consistency in the giving of partial credit. Each paper must be counter-checked by a corrector of another part of the paper.
43. The top three scorers will be awarded with certificates, medals and cash prizes regardless of their scores.
44. Certificates of merit will be given to all non-winning Regional Finalists while certificates of recognition will be given to all trainers/coaches.
- B. TEAM ORAL COMPETITION: (Grade 6 and Grade 10 only)**

57. The contestants will be ranked according to the combined scores and the top three will be declared winners. In case of a tie among any of the teams vying for the first three places, a set of 3 questions will be given to break the tie, one from each category of questions. If the tie is not broken after the three questions, "do or die" questions will be given.

C. **TEAM COMPETITION: (Grade 6 and Grade 10 only)**

58. The team contestants will undergo an oral competition only.

Note: The complete mechanics of both the individual and team competitions at the national level shall be explained prior to the start of the contest.

November **20**, 2015

Deadline for submission of MTC Form No. 1 (Registration Form) of Public and Private Schools to be submitted to respective DepEd Division Offices.

January **14** and **15**, 2016

Elimination Round for Elementary Level (January 14) and High School Level (January 15)

February **19**, 2016

Regional Finals

FOR MORE DETAILS



+632 912 5249
+632 709 0447
+632 898 8898



icorone1_mtaphil@yahoo.com
mark.ravanzo@metrobank.com.ph



/MetrobankMathChallenge

COMPETITION SCHEDULE

December **11**, 2015

Deadline for Online Submission of MTC Form No. 2 (DepEd Division Math Students) and to Submit Summary of Total Participating Students per Grade Levels to the MTC Division Office.

February **4** and **5**, 2016

Division Team Finals for Elementary (February 4) and High School Level (February 5)

March **18**, 2016

National Oral and Written Finals

March **19**, 2016

National Finals (Individual and Team Orals) and Awarding Ceremonies
Venue is Metrobank Plaza Auditorium, Makati City



CONTEST MECHANICS

MMC Document No. 3



I. ELIMINATION ROUNDS

1. The contestants from each participating school shall take the elimination round in a testing center designated by the Division. The elimination round is a written test.
2. Contestants register by sending a copy of their MMC Form No. 1 to the local DepEd Division on or before November 13, 2015. Upon registration on the actual date of the elimination rounds, they present the original copy of MMC Form 1 and contestants shall be assigned their testing rooms.
3. Contestants in a testing room must be of the same grade level. Students from the same school must not sit beside each other nor one behind the other.
4. Contestants are NOT allowed to bring cellphone, iPod, iPad, camera, calculator, laptop computer and other gadgets inside the testing room.
5. The proctor shall distribute first the scratch papers where the contestants shall solve the problems. Contestants should write their names in all the scratch papers.
6. Before distributing the test papers, the proctor should tell the contestants that they should write only the name and school on the test paper. No one should begin answering the questions unless the proctor gives the signal to do so.
7. The proctor tells the contestants that **only the final answers** must be written on the test paper. All solutions shall be placed on the scratch papers which should also be turned over to the proctors together with the test paper.
8. The proctor informs the contestants of the time limit for the test. He gives the signal for the contestants to begin. Then, he writes on the board "Time Started: _____" and "Time Ends: _____". Duration of the test:

Grade Level	Time Allotment
Grades 1 and 2	60 minutes
Grades 3 and 4	80 minutes
Grades 5 and 6	100 minutes
Grade 7 to 10	1 hour

9. Proctor gives 15 minutes and 5 minutes warning before the time is up. All test and scratch papers should be collected when the time is up.
10. The proctor shall give all papers (answered test papers, scratch papers, extra copies of questions) to the person in-charge of assigning the chairs.
11. If any student submits the paper before the time, the proctor shall accept it and ask the student to leave the classroom. The proctor shall collect all papers when the time is up and will not allow any extension.

12. The papers shall be corrected using the answer keys provided. Answer keys shall only be opened just before correction begins. Each correct answer merits one point.
13. The scores of the top two contestants of a school by grade/year level shall be added to form the school's score. Suppose the scores of the (3) contestants of **School A** in **Grade-1** are as follows:

Efren: 32 Rosa:35 Jose: 38

- The score of **School A** will be $35 + 38 = 73$. The **Grade 1** team from **School A** will be composed of Jose and Rosa.
- Assuming **School A** qualifies to compete in the **Division Team Finals**, **Efren** will be the alternate if either Rosa or Jose is not available on the date of the competition.
- If in case both Jose and Rosa are not available to compete due to unforeseen circumstances, **Efren** will not be allowed to compete alone. Thus, their team will automatically be disqualified. **SUBSTITUTION IS NOT ALLOWED.**

B. DIVISION FINALS

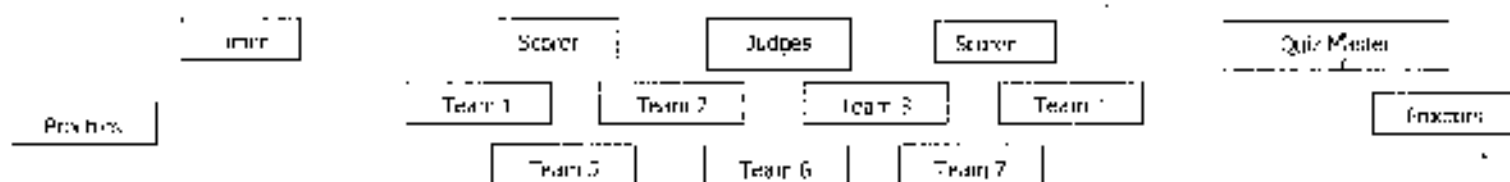
14. The Division Finals is a written-oral team competition.
15. Each team will be provided with slips of paper for the answer to each question. Before the first question, they will write their team identification on each slip.
16. There shall be 20 questions: 10 fifteen second questions worth 2 points each, 5 thirty-second questions worth 3 points each and 5 one minute questions worth 5 points each for a total of 60 points.
- a. The 15-second questions are to be answered mentally. There will be no writing anywhere, neither on paper, the table, etc. The team, of two, will work together as one to discuss their answer to the question. They may start discussing their solution after the first reading of each question.
 - b. For the 30 second questions, scratch paper will be provided for each team contestant. Contestants may begin solving as soon as they wish.
 - c. For 1 minute questions, a copy of the questions will be provided for each team. Scratch papers will be provided.
17. The quizmaster will read each question twice, after which he/she gives the GO signal. The timer starts when the quizmaster gives the GO signal.
18. Each answer will be written on the official answer slips provided. As soon as the buzzer rings, everybody must stop writing.
19. Proctors will collect the answer slips and give them to the judges who sort them into two sets: those with correct answers and those with wrong answers.
20. One of the judges will announce the teams with the correct answer. The scorers record the points obtained by each team for each correct answer.

21. Answers must be given complete with units and to the required accuracy. However if the unit is already given in the way the question is asked, it need not be given in the answer.
22. The teams will be ranked according to their total score in the three parts to determine the winners.
23. In case of a tie among any of the teams vying for the first three places, a set of 3 questions will be given to break the tie, one from each category of questions. If the tie is not broken after the three questions, "do or die" questions will be given.

COMPLAINTS OR CLARIFICATIONS

24. Only the official contestants may raise a complaint or clarification.
25. Complaints on a given question should be made before the next question is asked. This should be directed to the Chairman of the Board of Judges.
26. The following are responsible for settling all questions, including protest, which may arise in the course of the competition:
 - **Elimination Round to the Division Finals** - Department of Education (DepEd)
 - **Regional Finals** - Mathematics Teachers Association of the Philippines, Inc. (MTAP)
 - **National Finals** - Metrobank Foundation, Inc. (MBFI)

SUGGESTED PHYSICAL ARRANGEMENT:



27. Each team of 2 will be seated in such a way that they can discuss their answers. They must be facing the judges.

MANPOWER REQUIREMENT:

28. Each venue requires the following support staff: 3 Judges, 1 Quizmaster, 2 Scorers (1 on the board/project on screen and 1 manual scoring using the score sheet), 1 timer, 1-proctor for every 4 to 5 teams.

BOARD OF JUDGES:

29. There will be a panel of three judges composed of persons competent in the field of Mathematics.
30. The board of judges shall resolve complaints and problems regarding the test questions and their respective answers.
31. All decisions of the board of judges shall be final.

CHANGES ON RULES AND REGULATIONS

32. Only the National Steering Committee reserves the right to make any modifications on the rules and regulations of the Competition.

III. REGIONAL FINALS

A. INDIVIDUAL COMPETITION: *(Grade 6 and 10 only)*

33. The Regional Finals for the Individual Competition is a written exam.
34. The test consists of three types of questions:
Part I - 15 questions worth 2 points each
Part II - 5 questions worth 3 points each; and
Part III - 3 questions worth 5 points each for a total of 60 points
35. For this competition, the contestants must use their code numbers given to them at the registration.
36. The Grade 6 contestants will be given 1.5 hours to answer the test; the Grade 10 contestants, 2 hours.
37. Partial credit will be given to answers in Parts II and III.
38. There may be more than one corrector for the papers, but only one may correct either Part II or III for the sake of consistency in the giving of partial credit. Each paper must be counter checked by a corrector of another part of the paper.

B. TEAM COMPETITION: *(Grade 6 and 10 only)*

39. The mechanics of the Regional Finals Team Competition is the same as that of the Division Finals.

IV. NATIONAL FINALS

A. INDIVIDUAL COMPETITION: *(Grade 6 and 10 only)*

40. The individual contestants will undergo both written and oral competitions. The individual written competition will be administered a day before the oral competition.
41. The final score of each individual contestant will be 60% of the written score + 40% of the oral score. This will be announced after the oral competition.
42. The contestants will be ranked according to the combined scores and the top three will be declared winners.

B. TEAM COMPETITION: *(Grade 6 and 10 only)*

43. The team contestants will undergo an oral competition only. The mechanics are the same as those of the Division and Regional Finals.
44. The top three teams will be declared winners. In case of a tie among any of the teams vying for the first three places, a set of 3 questions will be given to break the tie, one from each category of questions. If the tie is not broken after the three questions, "do or die" questions will be given.



Matrix of Assigned Supervisors

Region	DepEd Division	Title	First Name	M.I.	Last Name
I	Ilocos Norte	Ms.	Martina	R.	Aguillana
I	Ilocos Sur	Mr.	Nestor	G.	Villalor
I	La Union	Ms.	Erlinda	M.	Dela Pena
I	Pangasinan I	Ms.	Wilma	V.	Carrera
I	Pangasinan II	Mr.	Redentor	B.	Aquino
I	Alaminos City	Mrs.	Celia	R.	Quintinita
I	Candon City	Ms.	Norma	G.	Manzano
I	Dagupan City	Dr.	Rosalind	R.	Lornibao
I	Laoag City	Ms.	Lucena	G.	Sales
I	San Carlos City - Pangasinan	Ed. D	Priscilla	R.	Castro
I	San Fernando City - La Union	Dr.	Jose Mari	P.	Almeida
I	Urdaneta City	Ms.	Gloria Victoria	M.	Cravala
I	Vigan City	Mr.	Pelagio	F.	Cardenas
I	City of Batac	Mrs.	Nermalyn	M.	Ulep
II	Balabac	Ms.	Violeta	H.	Binalon
II	Cagayan	Dr.	Rommel	L.	Libang
II	Isabela	Mr.	Rodrigo	V.	Pascua
II	Nueva Vizcaya	Dr.	Nirfa Norie	A.	Aquino
II	Quirino	Ms.	Marjorie	S.	Pallaya
II	Cauayan City	Dr.	Emifhor	G.	Lomines
II	Santiago City	Mr.	Nilo	A.	Cantor
II	Tuguegarao City	Mr.	Inocencio	P.	Navor
II	Ilagan City	Mr.	Joseph	R.	Uanio
III	Aurora				
III	Bataan	Mr.	Frederick	Y.	Simbul
III	Bularan	Mr.	Terry	D.	Cruz
III	Nueva Ecija	Ms.	Rowena	M.	Castillo
III	Pampanga	Mr.	Diosdado	L.	Amio
III	Tarlac		Paulino	D.	De Pano
III	Zambales	Ms.	Maylene	M.	Manuel
III	Angeles City	Mrs.	Alma	B.	Gucco
III	Balanga City	Dr.	Merlinda	C.	Dominguez
III	Cabanatuan City	Dr. Priscilla	Priscilla	D.	Sanchez
III	Gapan City	Ms.	Jennie	C.	Javier
III	Mabalacat City				
III	Malolos City	Mrs.	Teresa	R.	Manlapaz
III	Munoz Science City	Mr.	Rodolfo	A.	Ozon
III	Olongapo City	Dr.	Roger	L.	Nugui

III	San Fernando City - Pampanga	Mr	Manuel	M.	Mendoza
III	San Jose City	Ms.	Slerma	R.	Corpuz
III	San Jose Del Monte	Mrs.	Ma. Corazon	P.	Loja
III	Tarlac City	Mr.	Immanuel Victor	F.	Celis
III	Meycauayan City	Ms.	Jocelyn	A.	Manalaysay
IV-A	Balangas	Mrs.	Elizabeth	R.	Tolentino
IV A	Cavite	Ms.	Fduarda	M.	Zapanta
IV-A	Laguna	Mrs.	Ruth	C.	Valdellon
IV-A	Quezon	Dr.	Celestina	M.	Alba
IV-A	Rizal	Mr.	Ferdinand	C.	Pascua
IV A	Antipola City	Ms.	Adelaida	A.	San Diego
IV A	Batangas City	Mrs.	Susana	M.	Panganiban
IV-A	Calamba City	Dr.	Lita	A.	Curacho
IV-A	Cavite City	mrs	cynthia	M.	Lastgonzales
IV-A	Dasmarias City	Dr.	Rita	L.	Dloy
IV A	Lipa City	Mrs.	Crispina	H.	Pesigan
IV-A	Lucena City	Dr.	Manuel	V.	Tranquena
IV A	San Pablo City	Prof.	Romeo	B.	Fule
IV-A	Sta. Rosa City	Ms.	Severa	C.	Salamat
IV-A	Tanauan City	Mr.	Ronaldo	V.	Ramilo
IV-A	Tayabas City	Mrs.	Pelagia	L.	Manalang
IV-A	Bacoor City	Mr.	Cesar	M.	Mojica
IV A	Imus City	Mrs.	Josephine	P.	Canlas
IV-R	Marinduque	Mrs.	Maita	M.	Lazares
IV B	Occidental Mindoro	Ms.	Elizabeth	T.	Delas Alas
IV B	Oriental Mindoro	Ms.	Ma. Levy	M.	Rivera
IV B	Palawan	Mr.	Fric	N.	Quillip
IV-R	Romblon	Mr.	Arnel	G.	Ong
IV B	Calapan City	Ms.	Olympia	C.	Iumangit
IV B	Puerto Princesa City	Mr.	Domingo	V.	Parul
V	Albay	Mr.	Rafael	R.	Ruemia
V	Camarines Norte	Mr.	Ramon	R.	Avila , PH.D.
V	Camarines Sur	Mr.	Sueno	s.	Iuzada Jr.
V	Catanduanes				
V	Masbate	Ms	Marna	I I.	Capellan
V	Sorsogon	Mr.	Rex	T.	Bafbin
V	Triga City	Mr.	Fermin	R.	Monte
V	Legazpi City	Ms.	Portia	P.	Encisa
V	Ligao City	Ms.	Edna	G.	Gregorio
V	Masbate City	Mrs.	Purila	A.	Allarajos
V	Naga City	Mr.	Rustico	A.	Azarta
V	Sorsogon City	Dr.	Elena	D.	Hubilla
V	Talaca City	Ms.	Evelyn	R.	Basilla
VI	Aklan	Mrs.	Erselyn	T.	Biray
VI	Antique	Mr.	Runato	A.	Basanes
VI	Capiz	Ms.	Elenia	P.	Baranda
VI	Guimaras	Ms.	Ellerda	E.	De la Cruz

VI	Iloilo	Dr.	Kim	S.	Arcena
VI	Negros Occidental	Ms.	Ma. Teresa	F.	Mijares
VI	Bacnotod City	Ms.	Josefa	M.	Jopson
VI	Bago City	Mrs.	Diorota	I.	Trojillo
VI	Cadiz City	Mr.	Cesar	P.	Llano
VI	Escalante City	Ms.	Ivy Joy	A.	Torres
VI	Iloilo City	Ms.	Ligaya	H.	Montelijao
VI	Kabankalan City	Mrs.	Rosemary	T.	Cornell
VI	Ia Carlota City	Dr.	Ruth	P.	Convite
VI	Passi City	Mr.	Winifred	S.	Pañes
VI	Roxas City	Mrs.	Rhodalyne	G.	Delcano
VI	Sagay City				
VI	San Carlos City - Negros	Mr.	Antonio	G.	Uy
VI	Silay City	Mr.	Jose	L.	Quinto
VII	Bohol	Mr.	Felix	C.	Galacin, Jr
VII	Cebu	Ms.	Pamela	A.	Rodemio
VII	Negros Oriental	Ms.	Esterlina	B.	Paragoso
VII	Siquijar	Mr.	Wiltrada	F.	Duran
VII	Bais City	Mr.	Oliver	C.	Catacutan
VII	Bayawan City	Mrs.	Emma	G.	Andian
VI	Bogo City	Dr.	Norma	M.	Lepiten
VII	Carcar City	Mr.	Philip	A.	Nacario
VII	Cebu City	Mr.	Cipriano	R.	Balili
VII	Danao City	Mrs.	Lilia	B.	Yhagier
VII	Dumaguete City	Dr.	Neri	C.	Ojastro
VII	Guihulngan City	Mr.	Ronilo	R.	Navarro
VI	Lapu-Lapu City	Dr.	Oliver	M.	Taburan
VII	Mandaue City	Dr.	Jaime	P.	Ruelan
VII	Naga City of Cebu	Mr.	Edgar	I.	Gonzaga
VII	Tagbilaran City	Mr.	John Ariel	A.	Lagura
VII	Talisay City	Dr.	Sisia		Vasquez
VII	Tanjay City	Mrs.	Marilou	Z.	Dael
VII	Taloda City	Mr.	Ricardo	D.	Bahena
VIII	Biliran	Mr.	Rommel	M.	Tan, Sr.
VIII	Eastern Samar				
V-I	Leyte	Mr.	Ismael	I.	Posion
VIII	Northern Samar				
VIII	Samar (Western)				
VIII	Southern Leyte	Ms.	Elizabeth	M.	Deligero
VIII	Borongan City	Mrs.	Maria	A.	Vinas
VIII	Calbayog City	Mr.	Ubaldo	D.	Dinmangay
VIII	Catbalogan City	Mr.	Edgar	V.	Calvadpres
VII	Maasin City	Ms.	Rosemary	S.	Achacoso
VIII	Ormoc City	Mrs.	Daria	S.	Cecilio
VIII	Tacloban City	Mr.	Asele	P.	Makabenta
VII	Baybay City	Mrs.	Maria Teresa	P.	Rabanos
IX	Zamboanga del Norte	Mr.	Ismael	K.	Yusouh

IX	Zamboanga del Sur	Mr.	Florencio	R.	Caballero
IX	Zamboanga Sibugay	Mr.	Rosmindo	I.	Ancheta Jr.
IX	Dapitan City	Dr.	Esmeralda	A.	Bagaipo
IX	Dipolog City	Mr.	Pergentino	S.	Yabres
IX	Isabela City	Ms.	Llizabeth	S.	Lalip
IX	Pagadian City	Mr.	Joel	A.	Baterna
IX	Zamboanga City				
X	Bukidnon	Mr.	Ernesto	O.	Recina
X	Camiguin	Dr.	Emelia	G.	Aclan
X	Lanao del Norte	Ms.	Lorraine	C.	Olavides
X	Misamis Occidental	Mr.	Roy	D.	Iabil
X	Misamis Oriental	Dr.	Joel	L.	Jayme
X	Cagayan de Oro City	Mr.	Rosalio	R.	Vitorillo
X	El Salvador City	Mrs.	Lina	C.	Bajiga
X	Gingoog City				
X	Iligan City	Mr.	Exqui Bryan	P.	Aron
X	Malaybalay City	Mrs.	Imelda	S.	Bentilo
X	Oroquieta City	Mr.	Richard	S.	Masong
X	Ozamis City	Mr.	Eulalio	S.	Kupinta
X	Tangub City		Romel	L.	Huertás
X	Valencia City	Dr.	Lorelie	V.	Ganulan
XI	Compostela Valley				
XI	Davao del Norte	Dr.	Eduard	C.	Amoguis
XI	Davao del Sur	Mr.	Christopher	P.	Felipe
XI	Davao Oriental	Mr.	Antonio	I.	Palma Gil
XI	Davao City	Mr.	Antonio	A.	Apat
XI	Digos City	Mrs.	Aida	A.	Bingnan
XI	Mati City	Mr.	Jeremias	C.	Cepiza
XI	Panabo City	Mr.	Apolinario	D.	Macabulos
XI	Samal City	Mrs.	Emma	A.	Campuredondo
XI	Tagum City	Engr.	Ambrosio Jr.	D.	Ayuban
XI	Colabato	Mr.	Odubias	D.	Flentorio
XI	Saranggani				
XI	South Cotabato	Ms.	Roselyn	G.	Dardo
XI	Sultan Kudarat	Mr.	Serenio	L.	Superio
XI	Cotabato City	Engr.	Reynaldo	S.E.	Villan
XI	General Santos City	Mrs.	Zaida	N.	Abiera
XI	Kidapawan City	Ms.	Alma	M.	Belarmino
XII	Koronadal City	Mrs.	Noemi	F.	Parcan
XII	Tacurong City	Ms.	Mayflor	D.	Romualdo
XIII	Agusan del Norte	Mr.	Nilo	R.	Verdon
XIII	Agusan del Sur	Mr.	Nilo	R.	Montano
XIII	Dinagat Islands	Ms.	Mila	D.	Geraldina
XIII	Surigao del Norte	Mrs.	Juanita	G.	Espinoza
XIII	Surigao del Sur	Ms.	Fdna	F.	Trinidad
XII	Bayugan City	Ms.	Letecia	A.	Delima
XII	Bislig City	Mr.	Demasthenes	I.	Quinal

XIII	Butuan City	Dr.	Donald	D.	Orbillos
XIII	Cabadbaran City	Mr.	Joel	I.	Pelenio
XIII	Siargao	Mrs.	Florence	E.	Almaden
XIII	Surigao City f	Ms.	Lea	S.	Sarvida
XIII	Tandag City	Mrs.	Perla	F.	Naranjo
CAR	Abra	Mr.	Lemuel	B.	Dickson
CAR	Apayao				
CAR	Benguet	Mr.	Wiltred	C.	Bagsan
CAR	Ifugao	Ms.	Marciana	M.	Aydingan
CAR	Kalinga	Dr.	Silverio	W.	Tawatoo
CAR	ML Province	Mr.	Khad	M.	Layag
CAR	Baguio City	Mr.	Francisco	C.	Copsiyan
CAR	Tabuk City	Mr.	Emmanuel	C.	Ubuan
NCR	Caloocan City	Ms.	Jocelyn	M.	Alinab
NCR	Las Pinas City	Ed. D.	Inlieta	C.	Clemente
NCR	Makati City	Mrs.	Angelita	S.	Jalimao
NCR	Malabon City	Ed. D.	Eliseo	B.	Raymundo
NCR	Mandaluyong City	Dr.	Alyn	G.	Mendoza
NCR	Manila	Ed. D.	Remylinda	I.	Soriano
NCR	Marikina City	Ms.	Carolina	O.	Guevara
NCR	Muntinlupa City	Mr.	Mervin	G.	Araja
NCR	Navotas City	Ms.	Magdalena	F.	Aranes
NCR	Paranaque City				
NCR	Pasay City	Mr.	Raymond	S.	San Juan
NCR	Pasig City	Miss	Teresita	S.	Taguba
NCR	Quezon City	Ms.	Thelma	T.	Villaluna
NCR	San Juan City	Ed. D.	Joel	I.	Lonecampo
NCR	Taguig City - Pateros	Ed. D.	Isidro	C.	Aguilar
NCR	Valenzuela City	Ms.	Victoria	C.	Tafala
NCR	NCR Private	Mrs.	Rechilda	P.	Villanue
NCR	NCR-Demo	Mr.	Mark	R.	Ravanzo
ARMM	Lanao del Sur I-A	Mr.	Sainodin	T.	Abontas
ARMM	Lanao del Sur J-B				
ARMM	Lanao del Sur II	Mrs.	Imelda	P.	Balt
ARMM	Maguindanao I	Ms.	Aida	M.	Pescado
ARMM	Maguindanao II	Ms.	Monera	K.	Alimudin
ARMM	Sulu				
ARMM	Tawi-Tawi				
ARMM	Basilan	Mr.	Isabelo	L.	Brillantes
ARMM	Marawi City				
ARMM	Lamitan City	Mr.	Jessie	D.	Paculdo



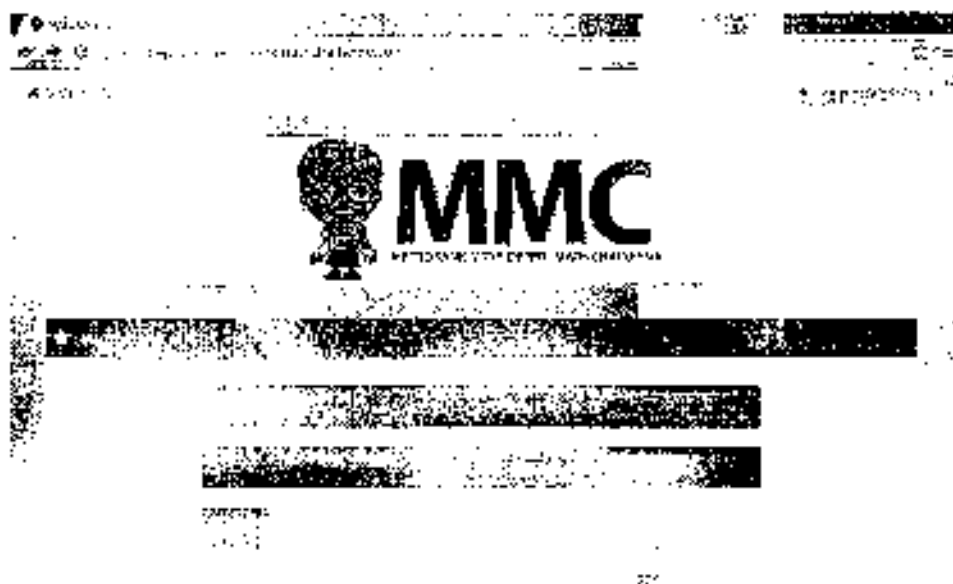
INSTRUCTIONS FOR THE MMC ONLINE PORTAL

MMC Document No. 4

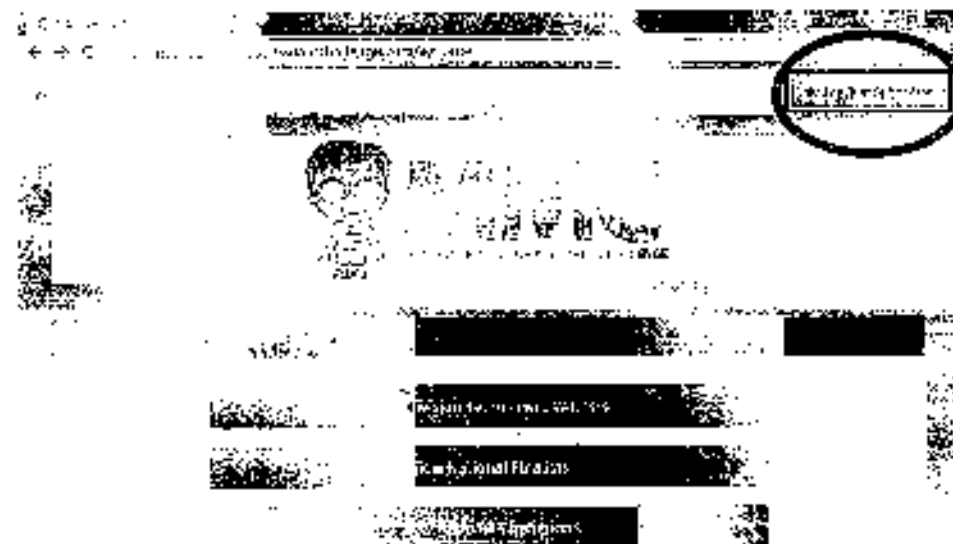


ACTIVATING THE MMC ACCOUNT

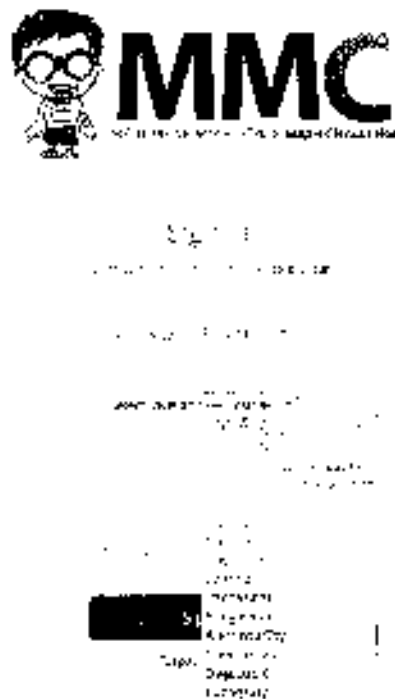
1. All DepEd Divisions were given one MMC online account to be managed by the Math Supervisor assigned by the DepEd Superintendent.
2. Pre-assign accounts are the same as the 2015 MMC online accounts. Please see the matrix of assigned Supervisors. To re-activate the MMC online account of your DepEd Division, please go to <http://onlineportal.metrobankmathchallenge.com>. Below is the homepage:



3. To log-in, click the "Log in as Supervisor" at the upper right portion of the webpage.



6. Then, select corresponding 'Division' from the dropdown menu. The choices for the 'Division' changes according to the 'Region' selected.



7. After selecting a 'Division', the 'Username' field will be automatically occupied. To finally log-in, input the password and click the "Sign in" button.



- If the user cannot remember the password, he/she can click the 'Forgot Password' button. After clicking this, a notification will be sent to the email address of the assigned Math Supervisor to reset the user's password.

https://www.mmc-math.com/

MMC

ADAPTED MATHS WITH CHALLENGE

Hi there, Mark!

Looks like you have forgotten your password. Click the button below to reset your password.

[Click to reset Password](#)

Link expires in 10 minutes. If you do not receive an email, please contact your supervisor.

© 2016 MMC. All rights reserved. Terms & Conditions



© 2016 MMC

- Once successful and logged in, you will be directed to the 'Supervisor Dashboard' page which looks like the webpage below:

https://www.mmc-math.com/SupervisorDashboard.aspx

2016 MMC - Supervisor Dashboard



Dashboard

0

0

0

0

0

0

0

0

0

0

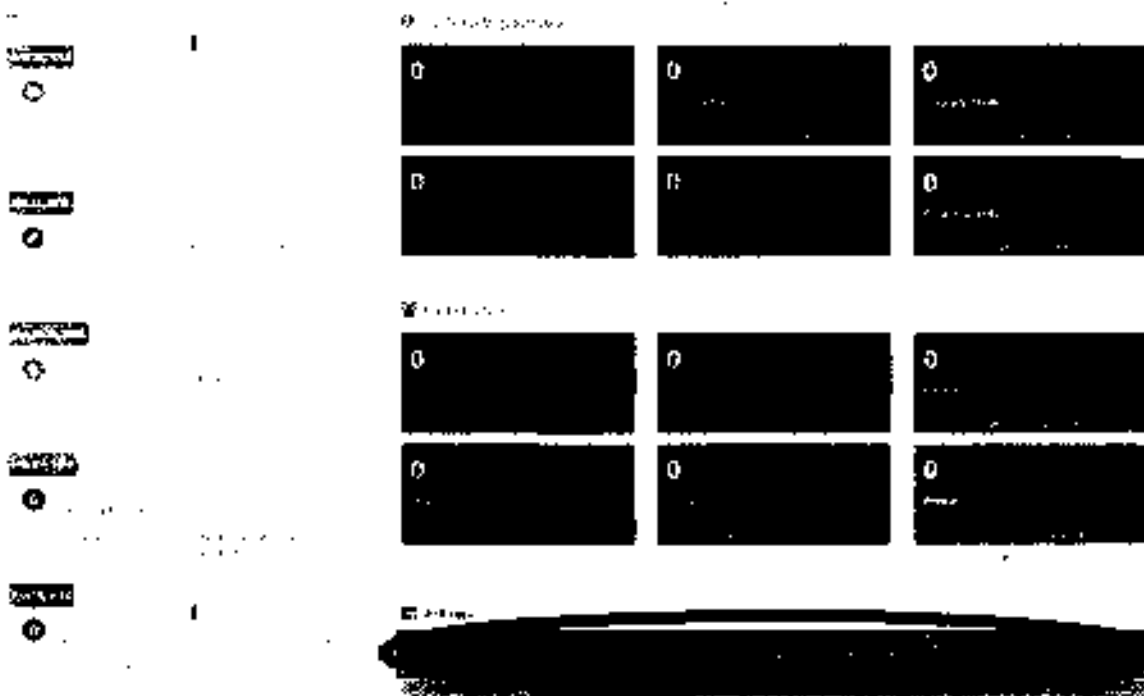
0

0

0

II. SUBMISSION OF MMC FORM 2

1. The Math Supervisors are required to send the MMC Form 2 online through the MMC online portal. After logging in, click the 'Upload the MMC Form 2 (Summary of Participants)' button on the Actions section at the bottom of the page.



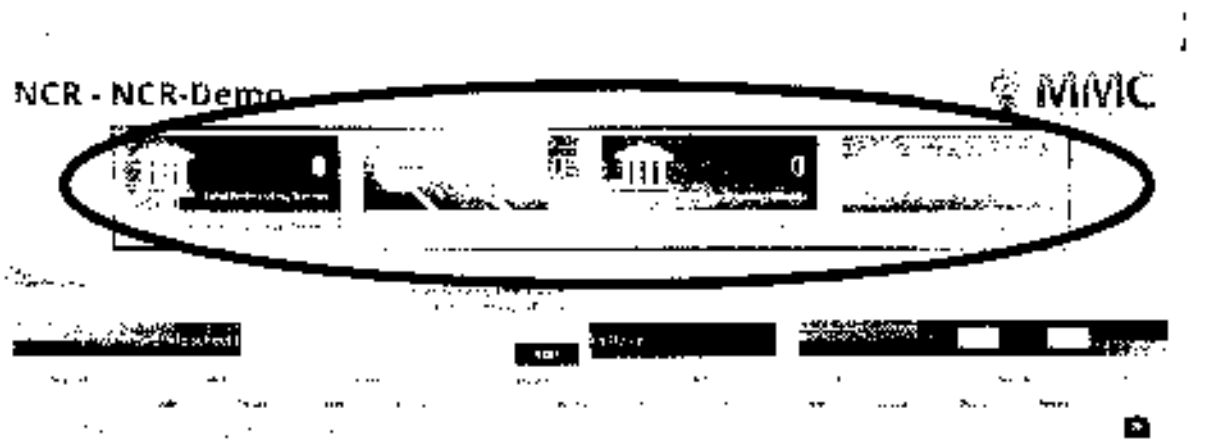
2. The user will be directed to another page where you can input data into the MMC Form 2. If it is your first time to login, a step by-step tutorial will appear to guide you in the process. Just click the 'Next' button to continue with the tutorial.



- You can also click the 'Start Tutorial' button on the upper right part of the page to go to the tutorial at any point in time.



- The numbers at the upper portion of the webpage are the summaries of the Division's participation. These are updated real-time as the form is filled out.



- To edit the numbers on the form, just click on the corresponding number and type the correct number of participants for the specified level.

NCR - NCR-Demo

MMC



- The user can also edit the name of the testing center by clicking on the Testing Center name and typing the correct name for the testing center.

Activity 2

NCR - NCR-Demo

MMC



- You can add a new testing center by clicking on the 'Add New Grade School Testing Center' button.



- After completing the summary of participants for each level in the grade school category, input the number of participating public and private schools for the grade school category.



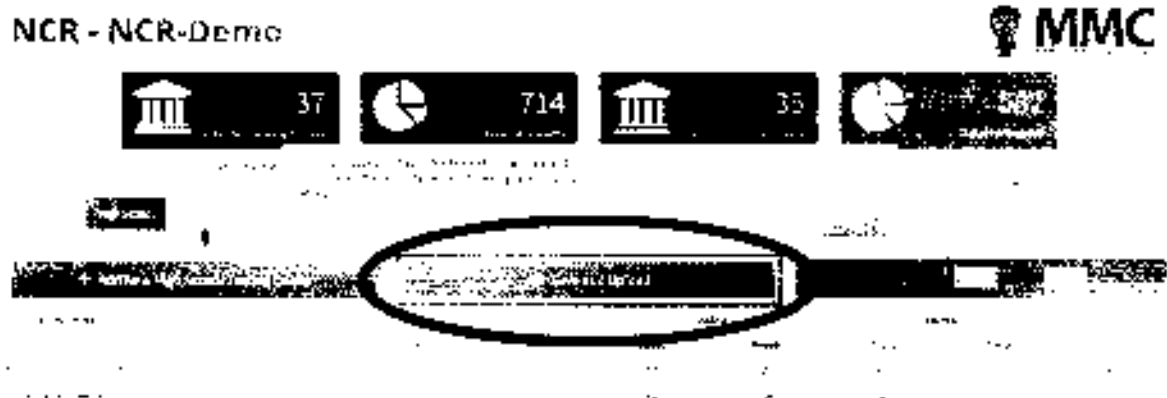
9. Take note that the initial page displayed is for the grade school category. To input the details for the high school category, click the 'High School' tab shown in the figure below.



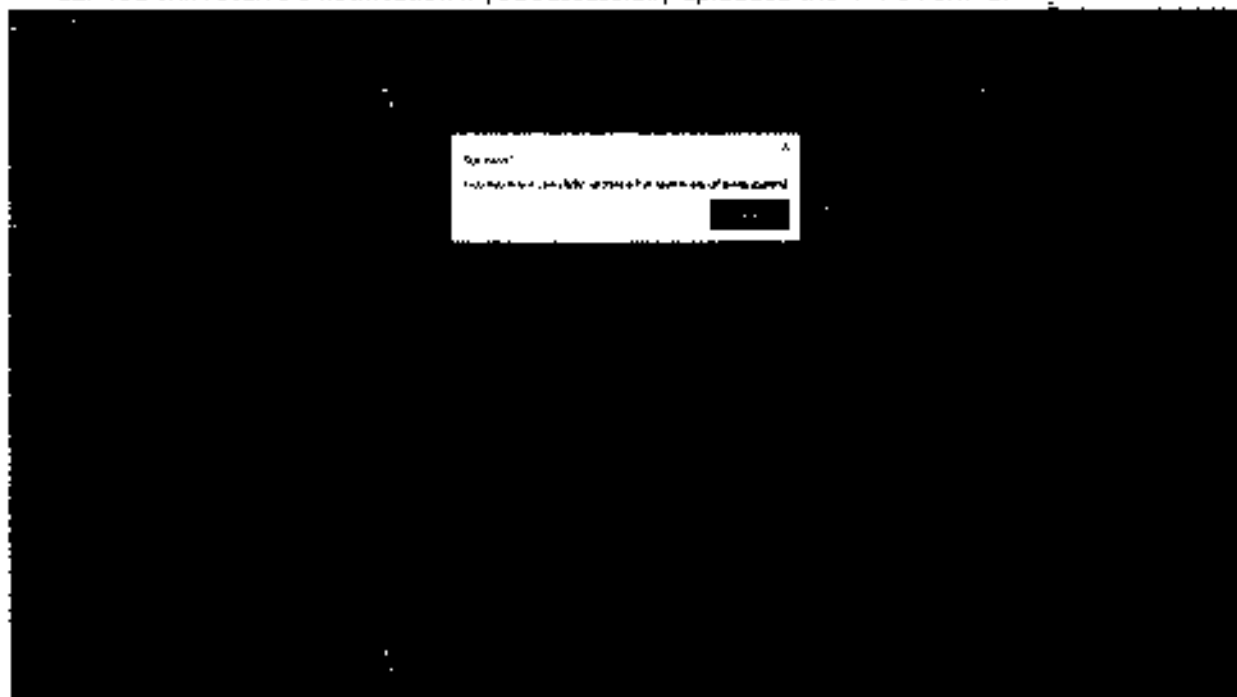
10. Repeat the same process for the high school category -- input the number of participants per level, update the testing center names, and input the total number of public and private schools participating.



11. To complete the submission at your DepEd Division, click on the 'Save and Upload' button to submit your MMC Form 2.



12. You will receive a notification if you successfully uploaded the MMC Form 2.



13. If you need to add or edit your submitted form, just do the whole process again or you can refer to Step No. 1 of Submission of MMC Form 2.



REGISTRATION FORM

(Elementary and Private Schools)

Form No. 1



DepEd Division: _____	Region: _____
Name of School: _____	Complete Address: _____
School Address: _____	School Email: _____
Contact Person: _____	Position: _____
Contact No.: _____	

Grade Level: _____

Name of Contestants:

1. _____

2. _____

3. _____

Name of Coach:

1. _____

Grade Level: _____

Name of Contestants:

1. _____

2. _____

3. _____

Name of Coach:

1. _____

Grade Level: _____

Name of Contestants:

1. _____

2. _____

3. _____

Name of Coach:

1. _____

Grade Level: _____

Name of Contestants:

1. _____

2. _____

3. _____

Name of Coach:

1. _____

Grade Level: _____

Name of Contestants:

1. _____

2. _____

3. _____

Name of Coach:

1. _____

Grade Level: _____

Name of Contestants:

1. _____

2. _____

3. _____

Name of Coach:

1. _____

I hereby certify the above mentioned contestants are bonafide students of our school:

Printed Name and Signature of the Principal

- IMPORTANT!**
- Contestants must be actually enrolled in the grade level they are competing. In **NO** instance shall mixed grade level participation in team competition be allowed.
 - Submit a photocopy of this registration form and the school identification cards of the contestants and the coaches to the DepEd Division Math Supervisor where you are located on or before **November 20, 2015**.
 - Present the original copy of the registration in-charge during the Elimination Round on **January 14, 2016 (Elementary)** or **January 15, 2016 (High School)**. **This serves as your permit. No permit, no entry.**
 - Ensure that your DepEd Division Math Supervisor will accomplish the MMC Form No. 2 via the MMC online portal on or before **December 11, 2015**.
 - Competition venues will be determined by the DepEd Division Math Supervisors. Please inquire before the Elimination Round.
 - This form may be photocopied for distribution as needed.
 - You may also download this form at www.mbfoundation.org.ph and FB page <https://www.facebook.com/metrobankmathchallenge>

652 912 5249
652 709 0447
652 858 8898

acorona_mta@h1@yahoo.com
markswan@metrobank.com.ph

/MetrobankMathChallenge